

# AVANOS

Digestive  
Health

Catalogue





<b>1. CORTRAK* 2 ENTERAL ACCESS SYSTEM (EAS)</b>	Page 5
- CORTRAK* 2 Nasogastric (NG) /Nasointestinal (NI) Feeding Tubes	Page 6
<b>2. CORFLO* NASOGASTRIC (NG) / NASOINTESTINAL (NI) FEEDING TUBES</b>	
- Adult, Paediatric	Page 7
- NI Endoscopically Placed Feeding Tubes	Page 9
<b>3. GASTRIC ACCESS FEEDING TUBES</b>	
- MIC* Percutaneous Endoscopic Gastrostomy (PEG)	Page 10
- CORFLO* Percutaneous Endoscopic Gastrostomy (PEG)	Page 12
- CORFLO* PEJ Jejunal Tube (PEJ)	Page 13
- MIC* Gastrostomy	Page 14
- MIC-KEY* Gastrostomy	Page 16
<b>4. JEJUNAL ACCESS FEEDING TUBES</b>	
- MIC* Jejunal	Page 18
- MIC-KEY* Jejunal	Page 19
<b>5. GASTRIC - JEJUNAL ACCESS FEEDING TUBES</b>	
- MIC* Gastric - Jejunal	Page 20
- MIC-KEY* Gastric - Jejunal	Page 21
<b>6. SURGICAL JEJUNOSTOMY FEEDING TUBE</b>	
- MIC* Jejunostomy Feeding Tube	Page 25
- MIC* Jejunostomy Feeding Tube Accessories	Page 25
<b>7. INTRODUCER PLACEMENT KIT (IPK)</b>	
- MIC-KEY* Introducer KITS	Page 26
- MIC-KEY* Introducer KIT for Gastrostomy Feeding Tubes	Page 27
- MIC-KEY* Introducer KIT for Jejunal and Gastric - Jejunal Feeding Tubes	Page 28
- SAF-T-PEXY* T-FASTENERS	Page 29
- Enteral Access Dilation System	Page 29
<b>8. ENTERAL ACCESSORIES</b>	
- MIC-KEY* Extension Sets	Page 30
- Stoma Measuring Device	Page 30
- CORGRIP* NG/NI Nasal Feeding Tube Retention System	Page 31
- ANCORIS* Tube Anchor System	Page 31
- CLOG ZAPPER* Enteral Feeding Tube Declogging System	Page 32
- FARRELL* Valve Enteral Gastric Pressure Relief System	Page 33
- Side-loading Clamp	Page 34
- NG/NI Extension Sets	Page 34

As a member of GEDSA, Avanos is committed to being an ENFit® compliant (ISO Standard 80369-3) company wherever possible.

Please note that NG tube weights used in this brochure are approximate only.

Where a patient recommendation size is stated this is only as a suggestion, clinical assessment must always take precedence.

## CORTRAK\* 2 ENTERAL ACCESS SYSTEM (EAS)

### ALL-IN-ONE MONITOR

Custom swivel mount  
bracket for easy  
viewing of the  
CORTRAK\* Monitor  
**Device Mount Adaptor:**  
20-0921



**Receiver Unit Cover  
Holder:** 20-0922



**QLN220 Printer:**  
20-0928



**Receiver Unit  
Smart Receiver Unit (SRU):**  
20-0952



Utility Basket†

**Receiver Unit  
Plastic Covers (Sleeves)  
for SRU:**  
20-0930



**Power Cord  
Management  
External Power Cord:**  
20-0968



**Telescoping heavy duty pole for  
personalised height adjustment  
Stand Conversion Kit:** 20-0923



**5-leg roll system\*  
with heavy swivel wheels  
and brakes**



### OTHER CORTRAK\* REPLACEMENT PARTS



**Interconnect  
Cable:**  
20-0966



**External  
Power Supply:**  
20-0975



**Printer  
Label Rolls:**  
20-0911

# ΔVΔNOS



## CORTRAK\* 2

### Enteral Access System (EAS)

**CORTRAK\* 2 Enteral Access System (EAS) - Starter Kit**

Product Code	Product Description	Packaging
20-0950	CORTRAK* 2 EAS All-In-One Monitor, Integrated Visual Display Terminal (VDT), Touch Screen and Embedded Computing System	Included
	Smart Receiver Unit (SRU)	Included
	Power Supply	Included
	Power Cord	Included
	Interconnect Cable	Included
	Operator's Manual with Service Guide	Included
	Tip Guide Booklet	Included
	1 - Year Factory Warranty	Included
20-0920	Stand (includes SRU Cover Holder)	Included
20-0928	Printer	Included
20-0929	Printer Charger	Included

**CORTRAK\* 2 EAS Replacement Part, Accessory Items & Warranty**

Product Code	Product Description	Packaging
20-0952	Smart Receiver Unit (SRU)	1/Case
20-0966	Reusable Cable	1/Case
20-0953	Li-Ion Battery Pack	1/Case
20-0928	Printer	1/Case
20-0929	Printer Charger	1/Case
20-0911	Printer Label Rolls	3/Case (125 per roll)
20-0926	Printer Replacement Battery	1/Case
20-0920	Stand (includes SRU Cover Holder)	1/Case
20-0930	Plastic Covers (Sleeves) for SRU	4/Case (25 bags per roll)
20-0954	Post Rail Clamp	1/Case
20-0962	1 - Year Extended Warranty	1/Case
20-0964	2 - Year Extended Warranty	1/Case

## CORTRAK\* 2

### NASOGASTRIC/NASOINTESTINAL FEEDING TUBE WITH ELECTROMAGNETIC TRANSMITTING STYLET WITH ENFit® CONNECTORS

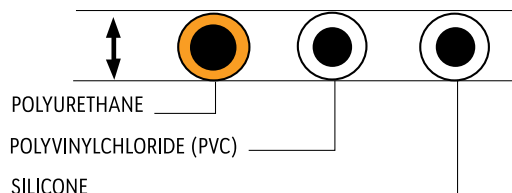


**CORTRAK\* 2 Nasogastric/Nasointestinal feeding tube with electromagnetic transmitting stylet with ENFit® connectors**

Product Code	Size (Outer Diameter)	Length	Weighted	Transmitting Stylet	ETO Sterile	Packaging
40-9368TRAK2	8 Fr	91 cm	No	✓		10/Case
40-9438TRAK2	8 Fr	109 cm	No	✓		10/Case
40-9558TRAK2	8 Fr	140 cm	No	✓		10/Case
40-9361TRAK2	10 Fr	91 cm	No	✓		10/Case
40-9431TRAK2	10 Fr	109 cm	No	✓		10/Case
40-9551TRAK2	10 Fr	140 cm	No	✓		10/Case
40-9432TRAK2	12 Fr	109 cm	No	✓		10/Case

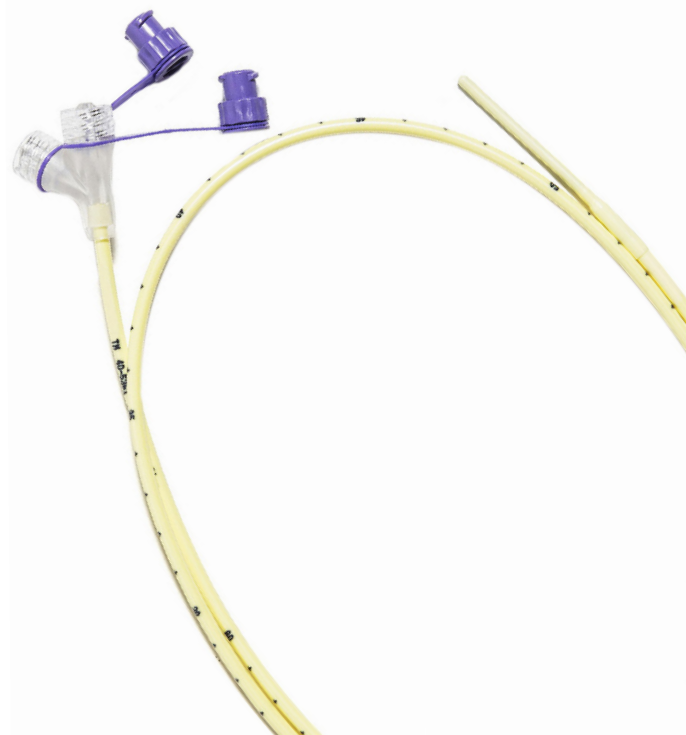
## NASOGASTRIC/NASOINTESTINAL FEEDING TUBE WITH ENFit® CONNECTORS

### COMPARISON OF TUBE INTERNAL DIAMETER (ID) VERSUS OUTER DIAMETER (OD)



CORFLO\* Polyurethane tubes offer a larger inner lumen than PVC and silicone tubes of the same French size

CORFLO\* tubes are constructed with polyurethane, making them excellent for long-term intubation.



### CORFLO\* Anti-Clog with ENFit® connectors

Product Code	Size (Outer Diameter)	Length	Weighted	Stylet	ETO Sterile	Packaging
42-1155	5 Fr	38 cm	No		✓	10/Case
42-1225	5 Fr	56 cm	No		✓	10/Case
42-9225	5 Fr	56 cm	No	✓	✓	10/Case
42-1365	5 Fr	91 cm	No		✓	10/Case
42-1156	6 Fr	38 cm	No		✓	10/Case
42-1226	6 Fr	56 cm	No		✓	10/Case
40-9226	6 Fr	56 cm	No	✓		10/Case
40-9366	6 Fr	91 cm	No	✓		10/Case
40-1366	6 Fr	91 cm	No			10/Case
42-1158	8 Fr	38 cm	No		✓	10/Case
42-1228	8 Fr	56 cm	No		✓	10/Case
40-9228	8 Fr	56 cm	No	✓		10/Case
40-9368	8 Fr	91 cm	No	✓		10/Case
40-1368	8 Fr	91 cm	No			10/Case
40-1438	8 Fr	109 cm	No			10/Case
40-9438	8 Fr	109 cm	No	✓		10/Case
40-9558	8 Fr	140 cm	No	✓		10/Case
40-1361	10 Fr	91 cm	No			10/Case
40-9361	10 Fr	91 cm	No	✓		10/Case
40-1431	10 Fr	109 cm	No			10/Case
40-9431	10 Fr	109 cm	No	✓		10/Case
40-9551	10 Fr	140 cm	No	✓		10/Case
40-1362	12 Fr	91 cm	No			10/Case
40-1432	12 Fr	109 cm	No			10/Case
40-9432	12 Fr	109 cm	No	✓		10/Case



**CORFLO\* Anti-Clog, Smooth Shaped Bolus, with ENFit® connectors**

Product Code	Size (Outer Diameter)	Length	Weighted	Stylet	ETO Sterile	Packaging
40-8226	6 Fr	56 cm	1 gm	✓		10/Case
40-8366	6 Fr	91 cm	1 gm	✓		10/Case
40-7366	6 Fr	91 cm	1.5 gm	✓		10/Case
40-8368	8 Fr	91 cm	1 gm	✓		10/Case
40-7368	8 Fr	91 cm	3 gm	✓		10/Case
40-5438	8 Fr	109 cm	3 gm			10/Case
40-7438	8 Fr	109 cm	3 gm	✓		10/Case
40-4438	8 Fr	109 cm	7 gm	✓		10/Case
40-5361	10 Fr	91 cm	3 gm			10/Case
40-7361	10 Fr	91 cm	3 gm	✓		10/Case
40-5431	10 Fr	109 cm	3 gm			10/Case
40-7431	10 Fr	109 cm	3 gm	✓		10/Case
40-4431	10 Fr	109 cm	7 gm	✓		10/Case
40-5362	12 Fr	91 cm	3 gm			10/Case
40-5432	12 Fr	109 cm	3 gm			10/Case
40-7432	12 Fr	109 cm	3 gm	✓		10/Case
40-4432	12 Fr	109 cm	7 gm	✓		10/Case

**CORFLO\* Anti-Clog, Pill Shaped Bolus with ENFit® connectors**

Product Code	Size (Outer Diameter)	Length	Weighted	Stylet	ETO Sterile	Packaging
40-6438	8 Fr	109 cm	3 gm	✓		10/Case
40-6431	10 Fr	109 cm	3 gm	✓		10/Case

**CORFLO\* Controller with ENFit® connectors**

Product Code	Size (Outer Diameter)	Length	Weighted	Stylet	ETO Sterile	Packaging
40-0438	8 Fr	109 cm	7 gm	✓		10/Case
40-0431	10 Fr	109 cm	7 gm	✓		10/Case
40-0432	12 Fr	109 cm	7 gm	✓		10/Case

**CORFLO\* Controller, Smooth Shaped Bolus with ENFit® connectors**

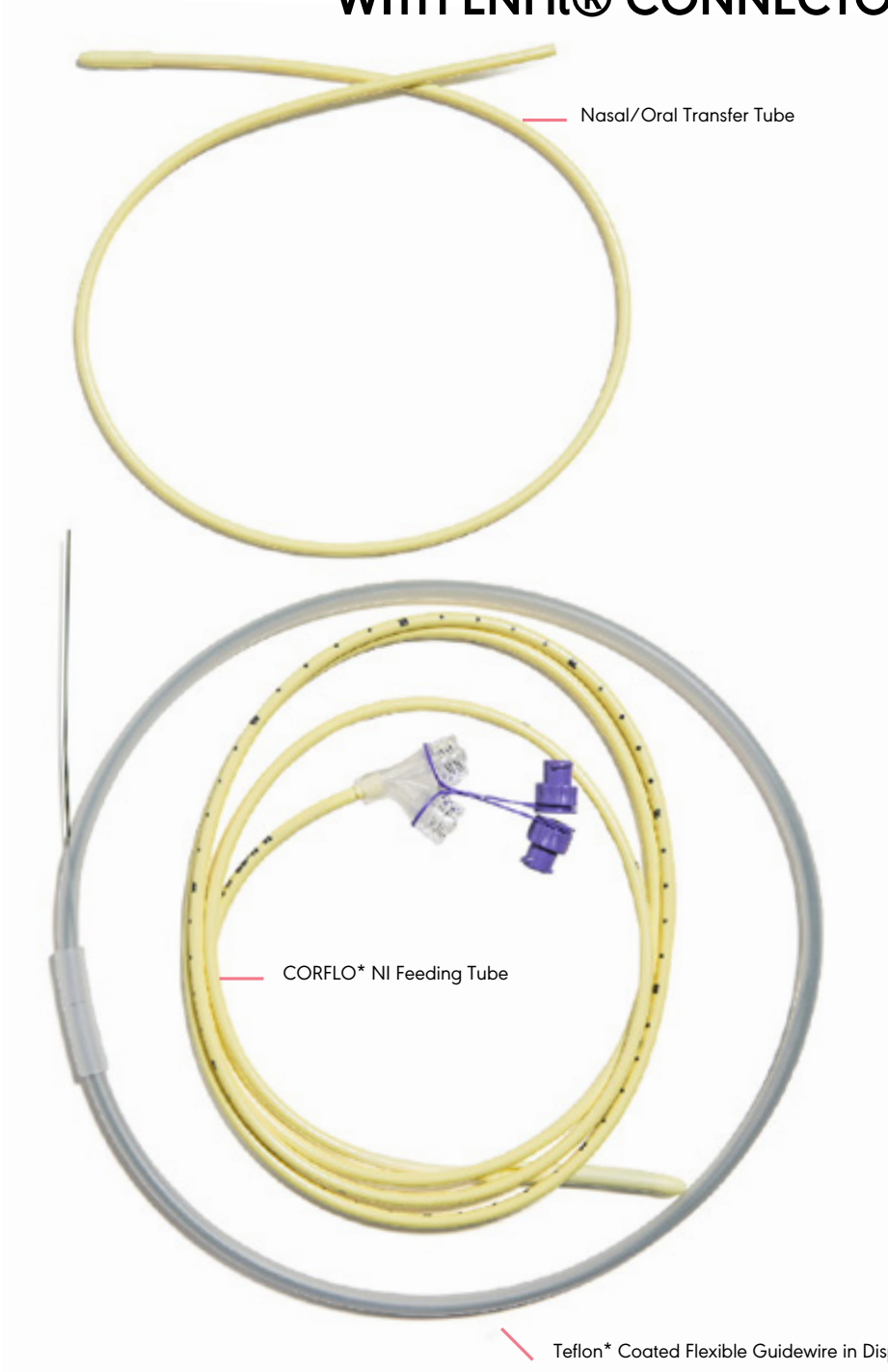
Product Code	Size (Outer Diameter)	Length	Weighted	Stylet	ETO Sterile	Packaging
40-3438	8 Fr	109 cm	3 gm	✓		10/Case
40-3431	10 Fr	109 cm	3 gm	✓		10/Case
40-3551	10 Fr	140 cm	3 gm	✓		10/Case

**CORFLO\* Controller, Pill Shaped Bolus with ENFit® connectors**

Product Code	Size (Outer Diameter)	Length	Weighted	Stylet	ETO Sterile	Packaging
40-2438	8 Fr	109 cm	3 gm	✓		10/Case
40-2431	10 Fr	109 cm	3 gm	✓		10/Case
40-2551	10 Fr	140 cm	3 gm	✓		10/Case



CORFLO\*  
NASOINTESTINAL ENDOSCOPICALLY  
PLACED FEEDING TUBE  
WITH ENFit® CONNECTORS



CORFLO\* Nasointestinal Endoscopically Placed Feeding Tube with ENFit® connectors

Product Code	Size (Outer Diameter)	Length	Weighted	Packaging
50-9601	10 Fr	152 cm	No	1/Case
50-4602	12 Fr	152 cm	7 gm	1/Case

# AVANOS GASTRIC ACCESS FEEDING TUBES

## MIC\* PERCUTANEOUS ENDOSCOPIC GASTROSTOMY (PEG) KITS & REPLACEMENT ADAPTERS WITH ENFit® CONNECTORS PULL & PUSH METHODS

PATIENT CARE BOOKLETS AVAILABLE  
ONLINE PATIENT EDUCATION TOOL:  
[tubefed.com.au](http://tubefed.com.au)

Feeding/Medication Port

Feeding/Medication Port

External Bolster: Ventilated  
to allow air circulation  
around stoma

PATIENT CARE BOOKLETS AVAILABLE

Internal Retention Bumper

## Deluxe 8630-xx Series PUSH PEG Kit Includes:

- 1- Traction removable PUSH PEG tube
- 1- 5 Fr Retrieval Snare (1.8mm x 260cm)
- 1- 8135-xx Universal ENFit® Feeding Adapter
- 1- SECUR-LOK® External Retention Ring
- 1- 22ga x 1.5", 3.81cm Filter Needle
- 1- 25ga x 1.5875cm Needle
- 1- 25ga x 1.5875cm Needle
- 1- Fenestrated Drape with Adhesive Tabs
- 1- 12ml Syringe
- 1- Disposable Scalpel with #11 Blade
- 1- 14ga x 6.985cm Introducer Needle
- 1- Guidewire (.038" x 260cm)
- 1- Tubing Clamp
- 4- 10.16cm x 10.16cm Gauze Pads
- 2- 5.08cm x 5.08cm in Slit Gauze Pads
- 1- Suture Strand
- 1- Directions for Use

## Deluxe 9640-xx Series PULL PEG Kit Includes:

- 1- Traction Removable PULL PEG Tube
- 1- 5 Fr Retrieval Snare (1.8mm x 260cm)
- 1- 8135-xx Universal ENFit® Feeding Adapter
- 1- SECUR-LOK® External Retention Ring
- 1- 22ga x 3.81cm Filter Needle
- 1- 19ga x 3.81cm Filter Needle
- 1- 25ga x 1.5875cm Needle
- 1- Fenestrated Drape with Adhesive Tabs
- 1- 12ml Syringe
- 1- Disposable Scalpel with #11 Blade
- 1- 14ga x 6.985cm Introducer Needle
- 1- Looped Placement Wire
- 1- Tubing Clamp
- 4- 10.16cm x 10.16cm Gauze Pads
- 2- 5.08cm x 5.08cm in Slit Gauze Pads
- 1- Suture Strand
- 1- Directions for Use

## MIC\* PEG Kit (PUSH - OTW) with ENFit® connectors, ETO Sterile

Product Code	Product Description	Size (Outer Diameter)	Packaging
8630-14	PUSH (Over-The-Wire) Method 14Fr	14 Fr	1/Case
8630-20	PUSH (Over-The-Wire) Method 20Fr	20 Fr	1/Case
8630-24	PUSH (Over-The-Wire) Method 24Fr	24 Fr	1/Case

## MIC\* PEG Kit (PULL) with ENFit® connectors, ETO sterile

Product Code	Product Description	Size (Outer Diameter)	Packaging
9640-14	PULL Method 14Fr	14 Fr	1/Case
9640-20	PULL Method 20Fr	20 Fr	1/Case
9640-24	PULL Method 24Fr	24 Fr	1/Case

## Deluxe 8644-xx Series Basic PULL PEG Kit Includes:

- 1- Traction Removable PULL PEG Tube
- 1- 8135-xx Universal ENFit® Feeding Adapter
- 1- SECUR-LOK® External Retention Ring
- 1- Disposable Scalpel with #11 Blade
- 1- 14ga x 6.985cm Introducer Needle
- 1- Looped Placement Wire
- 1- Tubing Clamp
- 1- Directions for Use

## MIC\* PEG Basic Kit with ENFit® Connections

Product Code	Product Description	Size (Outer Diameter)	Packaging
8644-14	Basic PULL PEG KIT 14Fr	14 Fr	1/Case
8644-20	Basic PULL PEG KIT 20Fr	20 Fr	1/Case
8644-24	Basic PULL PEG KIT 24Fr	24 Fr	1/Case

## Replacement Adaptors for MIC\* PEG tubes with ENFit® connectors

Product Code	Product Description	Packaging
8135-14	Replacement ENFit® Y Adapter for Use with MIC* 14Fr PEG	1/Case
8135-20	Replacement ENFit® Y Adapter for Use with MIC* 20Fr PEG	1/Case
8135-24	Replacement ENFit® Y Adapter for Use with MIC* 24Fr PEG	1/Case



Δ

V

Δ

N

O

S

CORFLO\*

MAX PERCUTANEOUS

ENDOSCOPIC GASTROSTOMY (PEG)

KITS WITH ENFit® CONNECTORS



Image representative of CORFLO\* MAX PEG Kit 50-5520

CORFLO\* MAX PEG Kit with ENFit® connectors

Product Code	Product Description	Packaging
50-6512	12Fr, Ring, CORFLO MAX PEG. Basic (Pull)	2/Case
50-6516	16Fr, Ring, CORFLO MAX PEG. Basic (Pull)	2/Case
50-6520	20Fr, Ring, CORFLO MAX PEG. Basic (Pull)	2/Case
50-5520	20Fr, Conical, CORFLO MAX PEG. Basic (Pull)	2/Case

COMPARISON OF TUBE INTERNAL DIAMETER (ID) VERSUS OUTER DIAMETER (OD)

POLYURETHANE

POLYVINYLCHLORIDE (PVC)

SILICONE

CORFLO\* Polyurethane tubes offer a larger inner lumen than PVC and silicone tubes of the same French size

CORFLO\* tubes are constructed with polyurethane, making them excellent for long-term intubation.



RING



CONICAL

CORFLO\* MAX PEG tubes Replacement Adaptors with ENFit® connectors

Product Code	Product Description	Packaging
50-6112	Replacement ENFit® Y Adapter for Use with Corflo Max* 12Fr PEG	5/Case
50-6116	Replacement ENFit® Y Adapter for Use with Corflo Max* 16Fr PEG	5/Case
50-6120	Replacement ENFit® Y Adapter for Use with Corflo Max* 20Fr PEG	5/Case

# ΔVΔNOS

## CORFLO\*

### PEG JEJUNAL TUBE WITH ENFit® CONNECTORS



OPEN TIP



GRIP TIP

CORFLO\* PEJ Tube with ENFit® connectors for use with CORFLO\* MAX PEG Tubes

Product Code	Product Description	Weighted	GRIP TIP* for 'beside the scope' technique	Over-The-Wire (OTW)	Packaging
50-7366	6Fr, 91cm length, 1gm* weight CORFLO* Jejunal Extension for use with 16Fr PEG Tube	✓	✓		5/Case
50-7368	8Fr, 91cm length, 3gm* weight CORFLO* Jejunal Extension for use with 20Fr PEG Tube	✓	✓		5/Case
50-7361	10Fr, 91cm length, 3gm* weight CORFLO* Jejunal Extension for use with 20Fr PEG Tube	✓	✓		5/Case
50-1438	8Fr, 109cm length, non-weighted CORFLO* Jejunal Extension for use with 20Fr PEG Tube			✓	2/Case
50-1431	10Fr, 109cm length, non-weighted CORFLO* Jejunal Extension for use with 20Fr PEG Tube			✓	2/Case

### BALLOON GASTROSTOMY FEEDING TUBES (MIC\* G) WITH ENFit® CONNECTORS

PATIENT CARE BOOKLETS AVAILABLE SIDE  
LOADING CLAMP AVAILABLE - PAGE 34  
ONLINE EDUCATION TOOL - [EDUCATION  
SPACE](#)



MIC\* G Feeding Tube with ENFit® connectors, Gamma Sterile

Product Code	Size (Outer Diameter)	Recommended Balloon Fill Volume	Maximum Fill Volume	Packaging
8100-12LV	12 Fr	2-3 ml	5 ml	1/Case
8100-14LV	14 Fr	3-5 ml	7 ml	1/Case
8100-16LV	16 Fr	3-5 ml	7 ml	1/Case
8100-18	18 Fr	7-10 ml	15 ml	1/Case
8100-20	20 Fr	7-10 ml	15 ml	1/Case
8100-22	22 Fr	7-10 ml	15 ml	1/Case
8100-24	24 Fr	7-10 ml	15 ml	1/Case
8100-26	26 Fr	7-10 ml	15 ml	1/Case
8100-28	28 Fr	7-10 ml	15 ml	1/Case
8100-30	30 Fr	7-10 ml	15 ml	1/Case

MIC\*  
BALLOON BOLUS GASTROSTOMY  
FEEDING TUBES (MIC\* G BOLUS)  
WITH ENFit® CONNECTORS



MIC\* Gastrostomy Bolus Tube with ENFit® connectors, Gamma Sterile

Product Code	Size (Outer Diameter)	Recommended Balloon Fill Volume	Maximum Fill Volume	Packaging
8110-12LV	12 Fr	2-3 ml	5 ml	1/Case
8110-14LV	14 Fr	3-5 ml	7 ml	1/Case
8110-16LV	16 Fr	3-5 ml	7 ml	1/Case
8110-18	18 Fr	7-10 ml	15 ml	1/Case
8110-20	20 Fr	7-10 ml	15 ml	1/Case
8110-22	22 Fr	7-10 ml	15 ml	1/Case
8110-24	24 Fr	7-10 ml	15 ml	1/Case



# AVANOS

## MIC-KEY\*

### LOW-PROFILE BALLOON GASTROSTOMY FEEDING TUBES (MIC-KEY\* G) WITH ENFit® EXTENSION SETS



PATIENT CARE BOOKLETS AVAILABLE REPLACEMENT  
EXTENSION SETS AVAILABLE - PAGE 30  
STOMA MEASURING DEVICE AVAILABLE - PAGE 30  
ONLINE EDUCATION TOOL - [EDUCATION SPACE](#)

#### Kit Includes:

- 1 MIC-KEY\* G Feeding Tube
- 1 MIC-KEY\* Continuous Feed Extension Set with ENFit® Connectors, 30.5cm length, SECUR-LOK® Right Angled Connector with Feeding and Medication ports and plugs
- 1 MIC-KEY\* Bolus Feed Extension Set with ENFit® Connectors, 30.5cm length, SECUR-LOK® Straight Connector with Feeding/Medication port
- 1 6ml Syringe (Luer Slip for inflation/deflation of the internal retention balloon via the balloon port)
- 1 35ml Enteral Feeding Syringe with ENFit® Connecto
- 4 Gauze Pads

MIC-KEY\* G Feeding Tube with ENFit® connectors, ETO sterile

Product Code	Size (Outer Diameter)	Stoma Length	Recommended Balloon Fill Volume	Maximum Fill Volume	Packaging
8140-12-0.8	12 Fr	0.8 cm	3 ml	5 ml	1/Case
8140-12-1.0	12 Fr	1.0 cm	3 ml	5 ml	1/Case
8140-12-1.2	12 Fr	1.2 cm	3 ml	5 ml	1/Case
8140-12-1.5	12 Fr	1.5 cm	3 ml	5 ml	1/Case
8140-12-1.7	12 Fr	1.7 cm	3 ml	5 ml	1/Case
8140-12-2.0	12 Fr	2.0 cm	3 ml	5 ml	1/Case
8140-12-2.3	12 Fr	2.3 cm	3 ml	5 ml	1/Case
8140-12-2.5	12 Fr	2.5 cm	3 ml	5 ml	1/Case
8140-12-2.7	12 Fr	2.7 cm	3 ml	5 ml	1/Case
8140-12-3.0	12 Fr	3.0 cm	3 ml	5 ml	1/Case
8140-12-3.5	12 Fr	3.5 cm	3 ml	5 ml	1/Case
8140-12-4.0	12 Fr	4.0 cm	3 ml	5 ml	1/Case
8140-14-0.8	14 Fr	0.8 cm	5 ml	10 ml	1/Case
8140-14-1.0	14 Fr	1.0 cm	5 ml	10 ml	1/Case
8140-14-1.2	14 Fr	1.2 cm	5 ml	10 ml	1/Case
8140-14-1.5	14 Fr	1.5 cm	5 ml	10 ml	1/Case
8140-14-1.7	14 Fr	1.7 cm	5 ml	10 ml	1/Case
8140-14-2.0	14 Fr	2.0 cm	5 ml	10 ml	1/Case
8140-14-2.3	14 Fr	2.3 cm	5 ml	10 ml	1/Case
8140-14-2.5	14 Fr	2.5 cm	5 ml	10 ml	1/Case
8140-14-2.7	14 Fr	2.7 cm	5 ml	10 ml	1/Case
8140-14-3.0	14 Fr	3.0 cm	5 ml	10 ml	1/Case
8140-14-3.5	14 Fr	3.5 cm	5 ml	10 ml	1/Case
8140-14-4.0	14 Fr	4.0 cm	5 ml	10 ml	1/Case
8140-14-4.5	14 Fr	4.5 cm	5 ml	10 ml	1/Case
8140-14-5.0	14 Fr	5.0 cm	5 ml	10 ml	1/Case

Product Code	Size (Outer Diameter)	Stoma Length	Recommended Balloon Fill Volume	Maximum Fill Volume	Packaging
8140-16-0.8	16 Fr	0.8 cm	5 ml	10 ml	1/Case
8140-16-1.0	16 Fr	1.0 cm	5 ml	10 ml	1/Case
8140-16-1.2	16 Fr	1.2 cm	5 ml	10 ml	1/Case
8140-16-1.5	16 Fr	1.5 cm	5 ml	10 ml	1/Case
8140-16-1.7	16 Fr	1.7 cm	5 ml	10 ml	1/Case
8140-16-2.0	16 Fr	2.0 cm	5 ml	10 ml	1/Case
8140-16-2.3	16 Fr	2.3 cm	5 ml	10 ml	1/Case
8140-16-2.5	16 Fr	2.5 cm	5 ml	10 ml	1/Case
8140-16-2.7	16 Fr	2.7 cm	5 ml	10 ml	1/Case
8140-16-3.0	16 Fr	3.0 cm	5 ml	10 ml	1/Case
8140-16-3.5	16 Fr	3.5 cm	5 ml	10 ml	1/Case
8140-16-4.0	16 Fr	4.0 cm	5 ml	10 ml	1/Case
8140-16-4.5	16 Fr	4.5 cm	5 ml	10 ml	1/Case
8140-16-5.0	16 Fr	5.0 cm	5 ml	10 ml	1/Case
8140-18-0.8	18 Fr	0.8 cm	5 ml	10 ml	1/Case
8140-18-1.0	18 Fr	1.0 cm	5 ml	10 ml	1/Case
8140-18-1.2	18 Fr	1.2 cm	5 ml	10 ml	1/Case
8140-18-1.5	18 Fr	1.5 cm	5 ml	10 ml	1/Case
8140-18-1.7	18 Fr	1.7 cm	5 ml	10 ml	1/Case
8140-18-2.0	18 Fr	2.0 cm	5 ml	10 ml	1/Case
8140-18-2.3	18 Fr	2.3 cm	5 ml	10 ml	1/Case
8140-18-2.5	18 Fr	2.5 cm	5 ml	10 ml	1/Case
8140-18-2.7	18 Fr	2.7 cm	5 ml	10 ml	1/Case
8140-18-3.0	18 Fr	3.0 cm	5 ml	10 ml	1/Case
8140-18-3.5	18 Fr	3.5 cm	5 ml	10 ml	1/Case
8140-18-4.0	18 Fr	4.0 cm	5 ml	10 ml	1/Case
8140-18-4.5	18 Fr	4.5 cm	5 ml	10 ml	1/Case
8140-18-5.0	18 Fr	5.0 cm	5 ml	10 ml	1/Case
8140-20-0.8	20 Fr	0.8 cm	5 ml	10 ml	1/Case
8140-20-1.0	20 Fr	1.0 cm	5 ml	10 ml	1/Case
8140-20-1.2	20 Fr	1.2 cm	5 ml	10 ml	1/Case
8140-20-1.5	20 Fr	1.5 cm	5 ml	10 ml	1/Case
8140-20-1.7	20 Fr	1.7 cm	5 ml	10 ml	1/Case
8140-20-2.0	20 Fr	2.0 cm	5 ml	10 ml	1/Case
8140-20-2.3	20 Fr	2.3 cm	5 ml	10 ml	1/Case
8140-20-2.5	20 Fr	2.5 cm	5 ml	10 ml	1/Case
8140-20-2.7	20 Fr	2.7 cm	5 ml	10 ml	1/Case
8140-20-3.0	20 Fr	3.0 cm	5 ml	10 ml	1/Case
8140-20-3.5	20 Fr	3.5 cm	5 ml	10 ml	1/Case
8140-20-4.0	20 Fr	4.0 cm	5 ml	10 ml	1/Case
8140-20-4.5	20 Fr	4.5 cm	5 ml	10 ml	1/Case
8140-20-5.0	20 Fr	5.0 cm	5 ml	10 ml	1/Case
8140-24-1.5	24 Fr	1.5 cm	5 ml	10 ml	1/Case
8140-24-1.7	24 Fr	1.7 cm	5 ml	10 ml	1/Case
8140-24-2.0	24 Fr	2.0 cm	5 ml	10 ml	1/Case
8140-24-2.3	24 Fr	2.3 cm	5 ml	10 ml	1/Case
8140-24-2.5	24 Fr	2.5 cm	5 ml	10 ml	1/Case
8140-24-2.7	24 Fr	2.7 cm	5 ml	10 ml	1/Case
8140-24-3.0	24 Fr	3.0 cm	5 ml	10 ml	1/Case
8140-24-3.5	24 Fr	3.5 cm	5 ml	10 ml	1/Case
8140-24-4.0	24 Fr	4.0 cm	5 ml	10 ml	1/Case
8140-24-4.5	24 Fr	4.5 cm	5 ml	10 ml	1/Case
8140-24-5.0	24 Fr	5.0 cm	5 ml	10 ml	1/Case

MIC\*  
BALLOON JEJUNAL FEEDING TUBES  
(MIC\* J) WITH ENFit®  
CONNECTORS



MIC\* J Feeding Tube with ENFit® connectors, Gamma sterile

Product Code	Size (Outer Diameter)	Recommended Balloon Fill Volume	Maximum Fill Volume	Packaging
8200-12LV	12 Fr	2-3 ml	5 ml	2/Case
8200-14	14 Fr	7-10 ml	15 ml	2/Case
8200-16	16 Fr	7-10 ml	15 ml	2/Case
8200-18	18 Fr	7-10 ml	15 ml	2/Case
8200-20	20 Fr	7-10 ml	15 ml	2/Case
8200-22	22 Fr	7-10 ml	15 ml	2/Case
8200-24	24 Fr	7-10 ml	15 ml	2/Case

Jejunal length for both MIC\* J and MIC-KEY\* J tubes is measured from the distal aspect of the retention balloon to the tube tip. The standard length is 51cm but these tubes can be trimmed for specific patient requirements.

**MIC-KEY\***

## LOW-PROFILE BALLOON JEJUNAL FEEDING TUBES (MIC-KEY\* J) WITH ENFit® EXTENSION SETS



**REPLACEMENT EXTENSION SETS AVAILABLE - PAGE 30**  
**STOMA MEASURING DEVICE AVAILABLE - PAGE 30**  
**PATIENT CARE BOOKLETS AVAILABLE**

### Kit Includes:

- 1 MIC-KEY\* J Feeding tube
- 1 Introducer Cannula
- 1 MIC-KEY\* Continuous Feed Extension Set with ENFit® Connectors, 30.5cm length, SECUR-LOK® Right Angled Connector with Feeding and Medication ports and plugs
- 1 MIC-KEY\* Bolus Feed Extension Set with ENFit® Connectors, 30.5cm length, SECUR-LOK® Straight Connector with Feeding/Medication port
- 1 6ml Syringe (Luer Slip for inflation/deflation of the internal retention balloon via the balloon port)
- 4 Gauze pads

**MIC-KEY\* J Feeding Tube., Extension Sets with ENFit® Connectors, Gamma Sterile**

Product Code	Size (Outer Diameter)	Stoma Length	Recommended Balloon Fill Volume	Maximum Fill Volume	Packaging
8230-14-0.8	14 Fr	0.8 cm	5 ml	10 ml	1/Case
8230-14-1.0	14 Fr	1.0 cm	5 ml	10 ml	1/Case
8230-14-1.2	14 Fr	1.2 cm	5 ml	10 ml	1/Case
8230-14-1.5	14 Fr	1.5 cm	5 ml	10 ml	1/Case
8230-14-1.7	14 Fr	1.7 cm	5 ml	10 ml	1/Case
8230-14-2.0	14 Fr	2.0 cm	5 ml	10 ml	1/Case
8230-14-2.3	14 Fr	2.3 cm	5 ml	10 ml	1/Case
8230-14-2.5	14 Fr	2.5 cm	5 ml	10 ml	1/Case
8230-14-2.7	14 Fr	2.7 cm	5 ml	10 ml	1/Case
8230-14-3.0	14 Fr	3.0 cm	5 ml	10 ml	1/Case
8230-14-3.5	14 Fr	3.5 cm	5 ml	10 ml	1/Case
8230-14-4.0	14 Fr	4.0 cm	5 ml	10 ml	1/Case
8230-14-4.5	14 Fr	4.5 cm	5 ml	10 ml	1/Case
8230-18-0.8	18 Fr	0.8 cm	5 ml	10 ml	1/Case
8230-18-1.0	18 Fr	1.0 cm	5 ml	10 ml	1/Case
8230-18-1.2	18 Fr	1.2 cm	5 ml	10 ml	1/Case
8230-18-1.5	18 Fr	1.5 cm	5 ml	10 ml	1/Case
8230-18-1.7	18 Fr	1.7 cm	5 ml	10 ml	1/Case
8230-18-2.0	18 Fr	2.0 cm	5 ml	10 ml	1/Case
8230-18-2.3	18 Fr	2.3 cm	5 ml	10 ml	1/Case
8230-18-2.5	18 Fr	2.5 cm	5 ml	10 ml	1/Case
8230-18-2.7	18 Fr	2.7 cm	5 ml	10 ml	1/Case
8230-18-3.0	18 Fr	3.0 cm	5 ml	10 ml	1/Case
8230-18-3.5	18 Fr	3.5 cm	5 ml	10 ml	1/Case
8230-18-4.0	18 Fr	4.0 cm	5 ml	10 ml	1/Case
8230-18-4.5	18 Fr	4.5 cm	5 ml	10 ml	1/Case

# AVANOS

**MIC\***

## GJ ENDOSCOPIC / RADIOLOGICAL PLACEMENT

PATIENT CARE BOOKLETS AVAILABLE

### Endo/Radio Kit Includes:

1 Gastric-Jejunal Feeding Tube  
1 Silicone coated guide wire  
1 35ml ENFit® syringe



### MIC\* GJ Feeding Tube with ENFit® connectors, Radiological/Endoscopic Placement, Gamma Sterile

Product Code	Size (Outer Diameter)	Jejunal Length†	Recommended Balloon Fill Volume	Maximum Fill Volume	Packaging
8650-16-15	16 Fr	15 cm	5 ml	10 ml	1/Case
8650-16-22	16 Fr	22 cm	5 ml	10 ml	1/Case
8650-16-30	16 Fr	30 cm	5 ml	10 ml	1/Case
8650-16	16 Fr	45 cm	7-10 ml	15 ml	1/Case
8650-18-22	18 Fr	22 cm	5 ml	10 ml	1/Case
8650-18-30	18 Fr	30 cm	5 ml	10 ml	1/Case
8650-18	18 Fr	45 cm	7-10 ml	15 ml	1/Case
8650-22	22 Fr	45 cm	7-10 ml	15 ml	1/Case

† Jejunal length measured from the distal aspect of the retention balloon to the catheter tip

**MIC\***

## GJ SURGICAL PLACEMENT



### Surgical Kit Includes:

1 Gastric-Jejunal Feeding Tube  
1 Abdominal Trocar and Sheath  
1 Slotted Transpyloric Cannula  
1 35ml ENFit® syringe

### MIC\* GJ Feeding Tube with ENFit® connectors - Surgical Placement, ETO sterile

Product Code	Size (Outer Diameter)	Jejunal Length†	Recommended Balloon Fill Volume	Maximum Fill Volume	Packaging
8660-16	16 Fr	45 cm	7-10 ml	15 ml	1/Case
8660-18	18 Fr	45 cm	7-10 ml	15 ml	1/Case
8660-22	22 Fr	45 cm	7-10 ml	15 ml	1/Case

† Jejunal length measured from the distal aspect of the retention balloon to the catheter tip

## MIC-KEY\*

### LOW-PROFILE BALLOON GASTRIC-JEJUNAL FEEDING TUBES (MIC-KEY\* GJ) WITH ENFit® EXTENSION SETS ENDOSCOPIC/RADIOLOGIC PLACEMENT

REPLACEMENT EXTENSION SETS AVAILABLE - PAGE 30  
STOMA MEASURING DEVICE AVAILABLE - PAGE 30  
PATIENT CARE BOOKLETS AVAILABLE

#### MIC-KEY\* GJ Low-Profile Feeding Tube

Multiple Feeding  
Exit Ports

Jejunal Feeding Port

Gastric  
Decompression  
Port

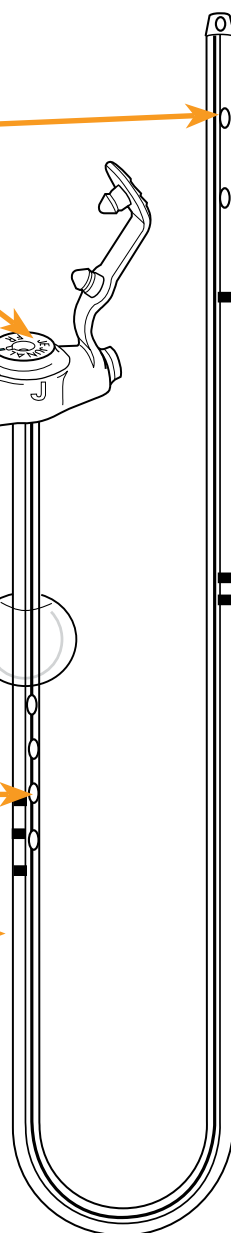
Low-Profile  
Design

Inflatable Internal  
Retention Balloon

Gastric Ports

Medical Grade  
Silicone  
Construction

Tungsten-  
weighted Jejunal  
Portion



#### Kit Includes:

- 1 MIC-KEY\* GJ Feeding tube
- 1 Introducer Cannula
- 1 MIC-KEY\* Continuous Feed Extension Set with ENFit® Connectors, 30.5cm length, SECUR-LOK® Right Angled Connector with Feeding and Medication ports and plugs
- 1 MIC-KEY\* Bolus Feed Extension Set with ENFit® Connectors, 30.5cm length, SECUR-LOK® Straight Connector with Feeding/Medication port 1 6ml Syringe (Luer Slip for inflation/deflation of the internal retention balloon via the balloon port)
- 4 Gauze pads

**MIC-KEY\* GJ Feeding Tube, Extensions Sets with ENFit® connectors, Gamma Sterile**

Product Code	Size (Outer Diameter)	Stoma Length	Jejunal Length†	Recommended Balloon Fill Volume	Maximum Fill Volume	Packaging
8270-14-1.0-15	14 Fr	1.0 cm	15 cm	3-5 ml	5 ml	1/Case
8270-14-1.0-22	14 Fr	1.0 cm	22 cm	3-5 ml	5 ml	1/Case
8270-14-1.2-15	14 Fr	1.2 cm	15 cm	3-5 ml	5 ml	1/Case
8270-14-1.2-22	14 Fr	1.2 cm	22 cm	3-5 ml	5 ml	1/Case
8270-14-1.2-30	14 Fr	1.2 cm	30 cm	3-5 ml	5 ml	1/Case
8270-14-1.5-15	14 Fr	1.5 cm	15 cm	3-5 ml	5 ml	1/Case
8270-14-1.5-22	14 Fr	1.5 cm	22 cm	3-5 ml	5 ml	1/Case
8270-14-1.5-30	14 Fr	1.5 cm	30 cm	3-5 ml	5 ml	1/Case
8270-14-1.5-45	14 Fr	1.5 cm	45 cm	7-10 ml	10 ml	1/Case
8270-14-1.7-15	14 Fr	1.7 cm	15 cm	3-5 ml	5 ml	1/Case
8270-14-1.7-22	14 Fr	1.7 cm	22 cm	3-5 ml	5 ml	1/Case
8270-14-1.7-30	14 Fr	1.7 cm	30 cm	3-5 ml	5 ml	1/Case
8270-14-1.7-45	14 Fr	1.7 cm	45 cm	7-10 ml	10 ml	1/Case
8270-14-2.0-22	14 Fr	2.0 cm	22 cm	3-5 ml	5 ml	1/Case
8270-14-2.0-30	14 Fr	2.0 cm	30 cm	3-5 ml	5 ml	1/Case
8270-14-2.0-45	14 Fr	2.0 cm	45 cm	7-10 ml	10 ml	1/Case
8270-14-2.3-30	14 Fr	2.3 cm	30 cm	3-5 ml	5 ml	1/Case
8270-14-2.3-45	14 Fr	2.3 cm	45 cm	7-10 ml	10 ml	1/Case
8270-14-2.5-30	14 Fr	2.5 cm	30 cm	3-5 ml	5 ml	1/Case
8270-14-2.5-45	14 Fr	2.5 cm	45 cm	7-10 ml	10 ml	1/Case
8270-14-2.7-30	14 Fr	2.7 cm	30 cm	3-5 ml	5 ml	1/Case
8270-14-2.7-45	14 Fr	2.7 cm	45 cm	7-10 ml	10 ml	1/Case
8270-14-3.0-45	14 Fr	3.0 cm	45 cm	7-10 ml	10 ml	1/Case
8270-14-3.5-45	14 Fr	3.5 cm	45 cm	7-10 ml	10 ml	1/Case
8270-14-4.0-45	14 Fr	4.0 cm	45 cm	7-10 ml	10 ml	1/Case
8270-14-4.5-45	14 Fr	4.5 cm	45 cm	7-10 ml	10 ml	1/Case
8270-14-5.0-45	14 Fr	5.0 cm	45 cm	7-10 ml	10 ml	1/Case
8270-14-5.5-45	14 Fr	5.5 cm	45 cm	7-10 ml	10 ml	1/Case
8270-14-6.0-45	14 Fr	6.0 cm	45 cm	7-10 ml	10 ml	1/Case
8270-14-6.5-45	14 Fr	6.5 cm	45 cm	7-10 ml	10 ml	1/Case
8270-14-7.0-45	14 Fr	7.0 cm	45 cm	7-10 ml	10 ml	1/Case
8270-16-1.0-15	16 Fr	1.0 cm	15 cm	3-5 ml	5 ml	1/Case
8270-16-1.0-22	16 Fr	1.0 cm	22 cm	3-5 ml	5 ml	1/Case
8270-16-1.2-15	16 Fr	1.2 cm	15 cm	3-5 ml	5 ml	1/Case
8270-16-1.2-22	16 Fr	1.2 cm	22 cm	3-5 ml	5 ml	1/Case
8270-16-1.2-30	16 Fr	1.2 cm	30 cm	3-5 ml	5 ml	1/Case
8270-16-1.5-15	16 Fr	1.5 cm	15 cm	3-5 ml	5 ml	1/Case
8270-16-1.5-22	16 Fr	1.5 cm	22 cm	3-5 ml	5 ml	1/Case
8270-16-1.5-30	16 Fr	1.5 cm	30 cm	3-5 ml	5 ml	1/Case
8270-16-1.5-45	16 Fr	1.5 cm	45 cm	7-10 ml	10 ml	1/Case
8270-16-1.7-15	16 Fr	1.7 cm	15 cm	3-5 ml	5 ml	1/Case
8270-16-1.7-22	16 Fr	1.7 cm	22 cm	3-5 ml	5 ml	1/Case
8270-16-1.7-30	16 Fr	1.7 cm	30 cm	3-5 ml	5 ml	1/Case
8270-16-1.7-45	16 Fr	1.7 cm	45 cm	7-10 ml	10 ml	1/Case
8270-16-2.0-22	16 Fr	2.0 cm	22 cm	3-5 ml	5 ml	1/Case
8270-16-2.0-30	16 Fr	2.0 cm	30 cm	3-5 ml	5 ml	1/Case
8270-16-2.0-45	16 Fr	2.0 cm	45 cm	7-10 ml	10 ml	1/Case
8270-16-2.3-30	16 Fr	2.3 cm	30 cm	3-5 ml	5 ml	1/Case
8270-16-2.3-45	16 Fr	2.3 cm	45 cm	7-10 ml	10 ml	1/Case



Product Code	Size (Outer Diameter)	Stoma Length	Jejunal Length†	Recommended Balloon Fill Volume	Maximum Fill Volume	Packaging
8270-16-2.5-30	16 Fr	2.5 cm	30 cm	3-5 ml	5 ml	1/Case
8270-16-2.5-45	16 Fr	2.5 cm	45 cm	7-10 ml	10 ml	1/Case
8270-16-2.7-30	16 Fr	2.7 cm	30 cm	3-5 ml	5 ml	1/Case
8270-16-2.7-45	16 Fr	2.7 cm	45 cm	7-10 ml	10 ml	1/Case
8270-16-3.0-45	16 Fr	3.0 cm	45 cm	7-10 ml	10 ml	1/Case
8270-16-3.5-45	16 Fr	3.5 cm	45 cm	7-10 ml	10 ml	1/Case
8270-16-4.0-45	16 Fr	4.0 cm	45 cm	7-10 ml	10 ml	1/Case
8270-16-4.5-45	16 Fr	4.5 cm	45 cm	7-10 ml	10 ml	1/Case
8270-16-5.0-45	16 Fr	5.0 cm	45 cm	7-10 ml	10 ml	1/Case
8270-16-5.5-45	16 Fr	5.5 cm	45 cm	7-10 ml	10 ml	1/Case
8270-16-6.0-45	16 Fr	6.0 cm	45 cm	7-10 ml	10 ml	1/Case
8270-16-6.5-45	16 Fr	6.5 cm	45 cm	7-10 ml	10 ml	1/Case
8270-16-7.0-45	16 Fr	7.0 cm	45 cm	7-10 ml	10 ml	1/Case
8270-18-1.2-22	18 Fr	1.2 cm	22 cm	3-5 ml	7 ml	1/Case
8270-18-1.2-30	18 Fr	1.2 cm	30 cm	3-5 ml	7 ml	1/Case
8270-18-1.5-22	18 Fr	1.5 cm	22 cm	3-5 ml	7 ml	1/Case
8270-18-1.5-30	18 Fr	1.5 cm	30 cm	3-5 ml	7 ml	1/Case
8270-18-1.5-45	18 Fr	1.5 cm	45 cm	7-10 ml	15 ml	1/Case
8270-18-1.7-22	18 Fr	1.7 cm	22 cm	3-5 ml	7 ml	1/Case
8270-18-1.7-30	18 Fr	1.7 cm	30 cm	3-5 ml	7 ml	1/Case
8270-18-1.7-45	18 Fr	1.7 cm	45 cm	7-10 ml	15 ml	1/Case
8270-18-2.0-22	18 Fr	2.0 cm	22 cm	3-5 ml	7 ml	1/Case
8270-18-2.0-30	18 Fr	2.0 cm	30 cm	3-5 ml	7 ml	1/Case
8270-18-2.0-45	18 Fr	2.0 cm	45 cm	7-10 ml	15 ml	1/Case
8270-18-2.3-30	18 Fr	2.3 cm	30 cm	3-5 ml	7 ml	1/Case
8270-18-2.3-45	18 Fr	2.3 cm	45 cm	7-10 ml	15 ml	1/Case
8270-18-2.5-30	18 Fr	2.5 cm	30 cm	3-5 ml	7 ml	1/Case
8270-18-2.5-45	18 Fr	2.5 cm	45 cm	7-10 ml	15 ml	1/Case
8270-18-2.7-30	18 Fr	2.7 cm	30 cm	3-5 ml	7 ml	1/Case
8270-18-2.7-45	18 Fr	2.7 cm	45 cm	7-10 ml	15 ml	1/Case
8270-18-3.0-45	18 Fr	3.0 cm	45 cm	7-10 ml	15 ml	1/Case
8270-18-3.5-45	18 Fr	3.5 cm	45 cm	7-10 ml	15 ml	1/Case
8270-18-4.0-45	18 Fr	4.0 cm	45 cm	7-10 ml	10 ml	1/Case
8270-18-4.5-45	18 Fr	4.5 cm	45 cm	7-10 ml	10 ml	1/Case
8270-18-5.0-45	18 Fr	5.0 cm	45 cm	7-10 ml	10 ml	1/Case
8270-18-5.5-45	18 Fr	5.5 cm	45 cm	7-10 ml	10 ml	1/Case
8270-18-6.0-45	18 Fr	6.0 cm	45 cm	7-10 ml	10 ml	1/Case
8270-18-6.5-45	18 Fr	6.5 cm	45 cm	7-10 ml	10 ml	1/Case
8270-18-7.0-45	18 Fr	7.0 cm	45 cm	7-10 ml	10 ml	1/Case
8270-22-1.5-45	22 Fr	1.5 cm	45 cm	7-10 ml	15 ml	1/Case
8270-22-1.7-45	22 Fr	1.7 cm	45 cm	7-10 ml	15 ml	1/Case
8270-22-2.0-45	22 Fr	2.0 cm	45 cm	7-10 ml	15 ml	1/Case
8270-22-2.3-45	22 Fr	2.3 cm	45 cm	7-10 ml	15 ml	1/Case
8270-22-2.5-45	22 Fr	2.5 cm	45 cm	7-10 ml	15 ml	1/Case
8270-22-2.7-45	22 Fr	2.7 cm	45 cm	7-10 ml	15 ml	1/Case

Product Code	Size (Outer Diameter)	Stoma Length	Jejunal Length†	Recommended Balloon Fill Volume	Maximum Fill Volume	Packaging
8270-22-3.0-45	22 Fr	3.0 cm	45 cm	7-10 ml	15 ml	1/Case
8270-22-3.5-45	22 Fr	3.5 cm	45 cm	7-10 ml	15 ml	1/Case
8270-22-4.0-45	22 Fr	4.0 cm	45 cm	7-10 ml	10 ml	1/Case
8270-22-4.5-45	22 Fr	4.5 cm	45 cm	7-10 ml	10 ml	1/Case
8270-22-5.0-45	22 Fr	5.0 cm	45 cm	7-10 ml	10 ml	1/Case
8270-22-5.5-45	22 Fr	5.5 cm	45 cm	7-10 ml	10 ml	1/Case
8270-22-6.0-45	22 Fr	6.0 cm	45 cm	7-10 ml	10 ml	1/Case
8270-22-6.5-45	22 Fr	6.5 cm	45 cm	7-10 ml	10 ml	1/Case
8270-22-7.0-45	22 Fr	7.0 cm	45 cm	7-10 ml	10 ml	1/Case

† Jejunal length measured from the distal aspect of the retention balloon to the catheter tip

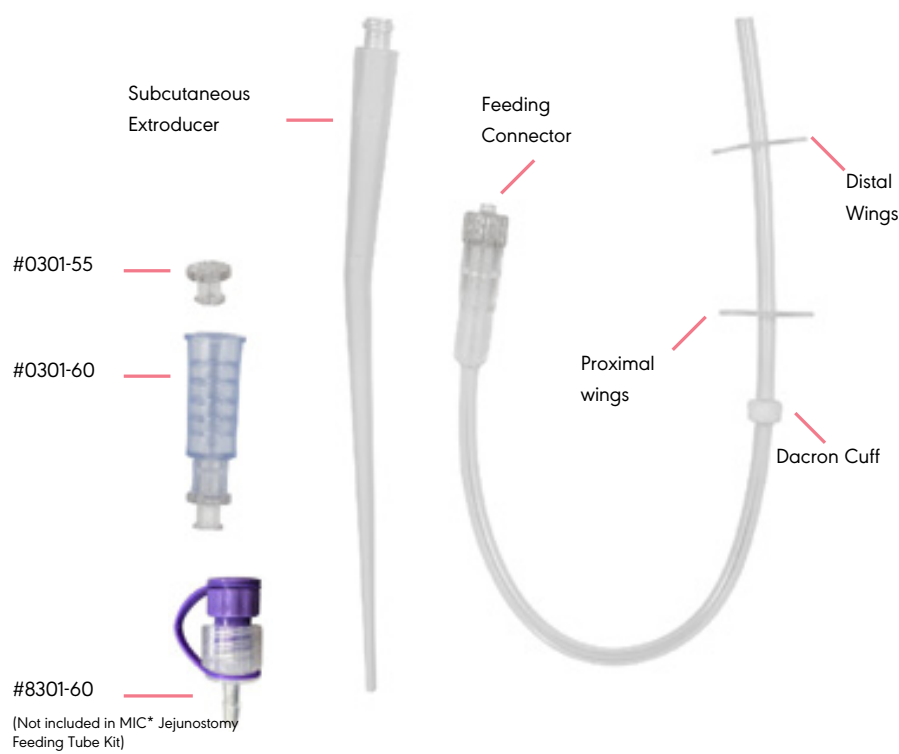


ΔVΔNOS

SURGICALLY PLACED JEJUNOSTOMY  
FEEDING TUBE & ACCESSORIES

MIC\*

JEJUNOSTOMY FEEDING TUBE



- Kit Includes:
- 1- Jejunostomy Tube
  - 1- Subcutaneous Extruder
  - 1- Feeding Port Adapter (non-ENFit®)
  - 1- LUER-LOK\* Cap

MIC\* Jejunostomy Feeding Tube, Gamma Sterile

Product Code	Product Description	Packaging
0301-14	14Fr, Non ENFit® MIC* Jejunostomy Feeding Tube	2/Case

MIC\*

JEJUNOSTOMY FEEDING TUBE  
ACCESSORIES



Image representative of 8301-60

Jejunostomy Feeding Tube Accessories

Product Code	Product Description	Packaging
0301-50	MIC* Jejunostomy Feeding Tube Repair Kit Only some items in this repair kit will be required for #0301-14	1/Case
0301-55	Jejunostomy LUER-LOK* Caps	5/Case
0301-60	Jejunostomy Feeding Port Adapter (non-ENFit®)	5/Case
8301-60	MIC* Jejunostomy Feeding Port with ENFit® Connector	25/Case

## MIC-KEY\*

# INTRODUCER KIT FOR GASTROSTOMY, JEJUNAL & GASTRIC-JEJUNAL FEEDING TUBES

MINIMISED TRAUMA &  
ENHANCED PATIENT COMFORT

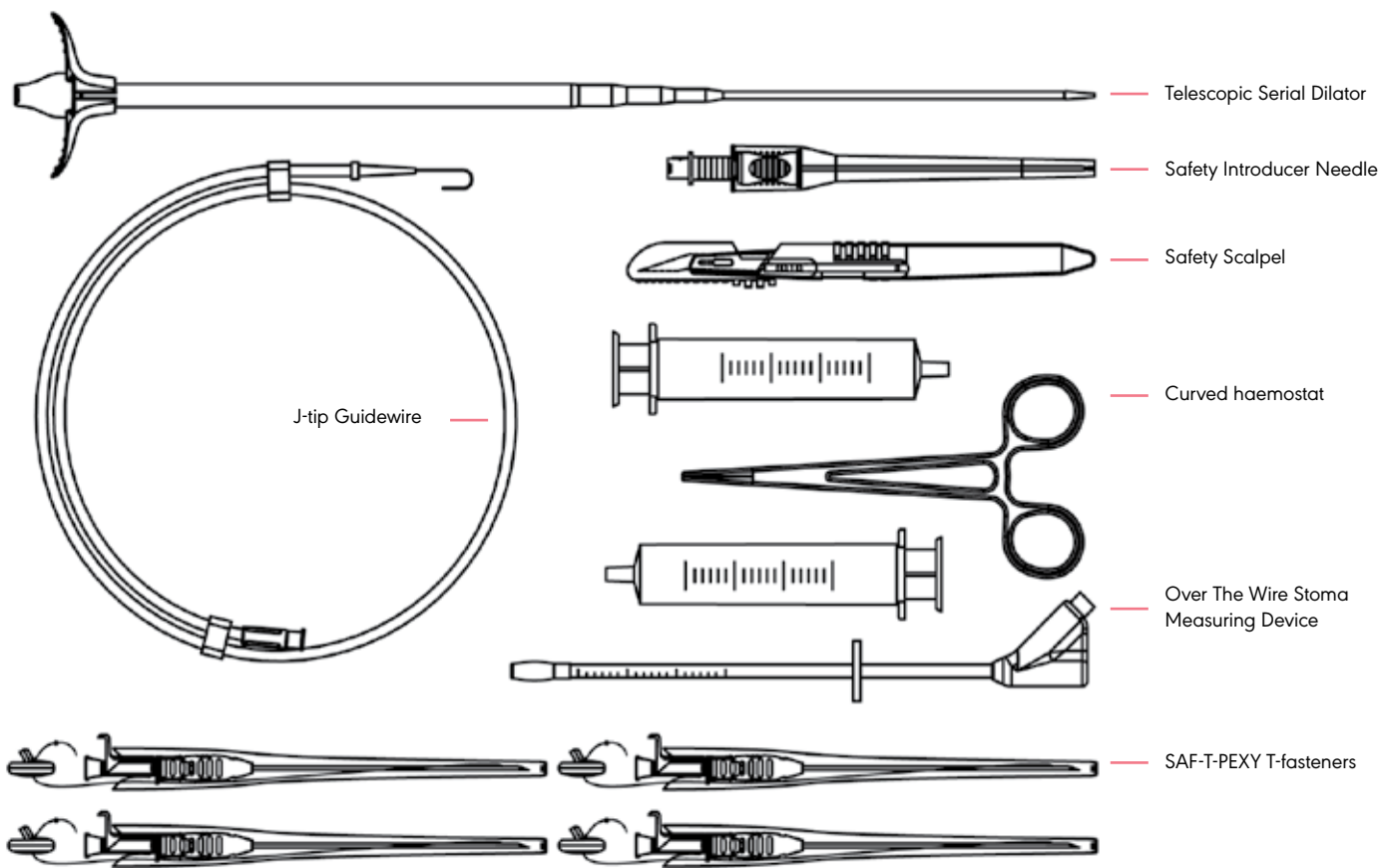
PATIENT CARE BOOKLETS AVAILABLE

Preloaded  
Safety Needles

3-0 BIOSYN\*  
Monofilament  
Absorbable Suture

Low-profile External  
Bolster Bumper

MIC-KEY\*  
INTRODUCER KIT FOR  
GASTROSTOMY FEEDING TUBES



MIC-KEY\* Introducer Kit for placement of MIC\* or MIC-KEY\* G Tubes, ETO sterile

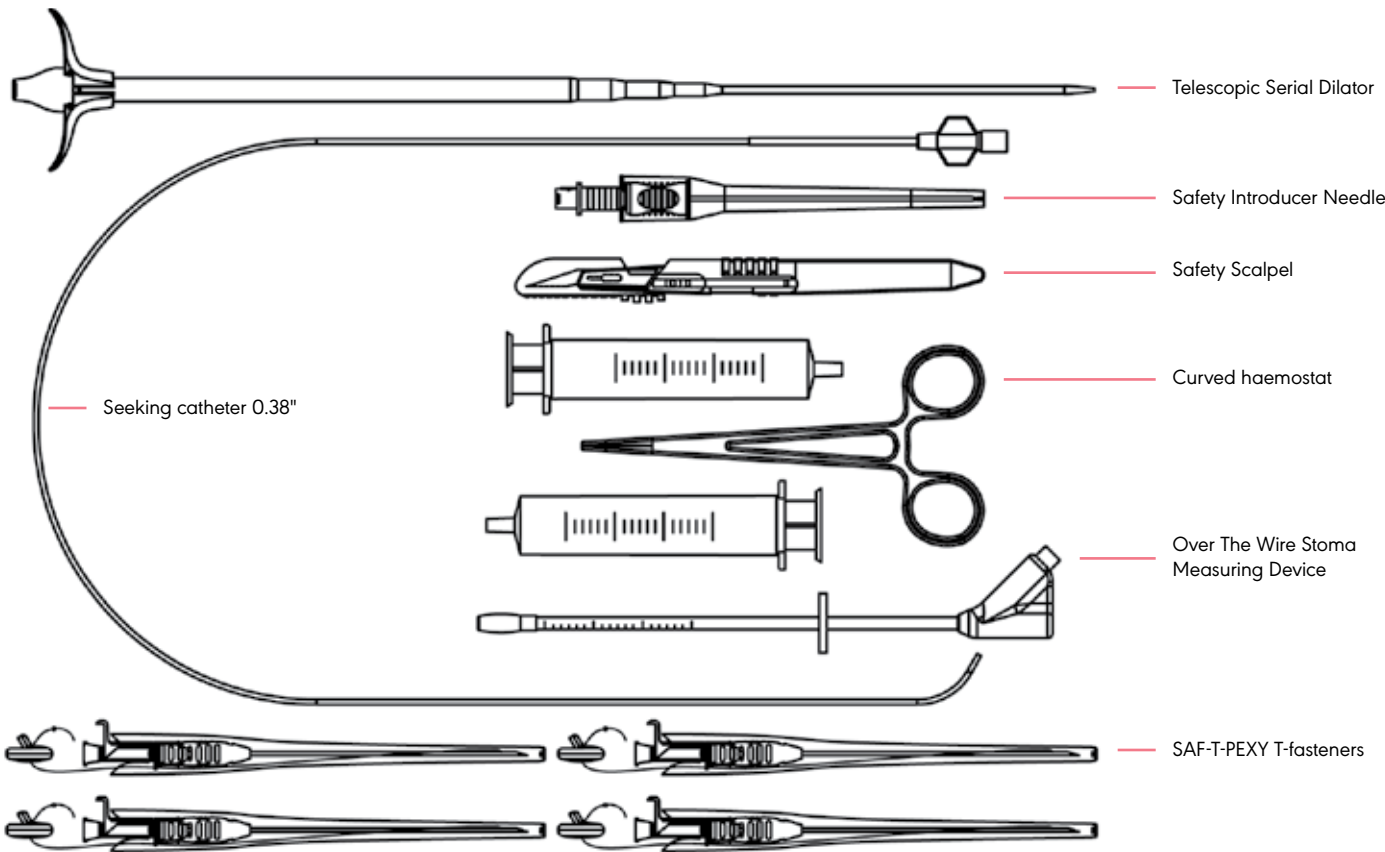
Kit Includes:

- Preloaded SAF-T-PEXY T-fasteners with resorbable 3/0 Biosyn\* suture and locking polyurethane suture lock
- Curved Haemostat
- Serial Dilator
- Safety Scalpel
- Safety Introducer Needle
- J-tip Guidewire
- OTW Stoma Measuring Device for accurate measurement of the stoma tract for a low profile tube
- Telescopic Serial Dilator with integrated Peel Away Sheath
- Luer Slip Syringes

Product Code	Product Description	Packaging
98430	16Fr, Introducer Kit for Use with 12Fr MIC* & MIC-KEY* G Tubes	1/Case
98431	18Fr, Introducer Kit for Use with 14Fr MIC* & MIC-KEY* G Tubes	1/Case
98432	20Fr, Introducer Kit for Use with 16Fr MIC* & MIC-KEY* G Tubes	1/Case
98433	22Fr, Introducer Kit for Use with 18Fr MIC* & MIC-KEY* G Tubes	1/Case
98434	24Fr, Introducer Kit for Use with 20Fr MIC* & MIC-KEY* G Tubes	1/Case

Feeding tubes are not included and need to be ordered separately

MIC-KEY\*  
INTRODUCER KIT FOR  
JEJUNAL & GASTRIC-JEJUNAL  
FEEDING TUBES



MIC-KEY\* Introducer Kit for placement of MIC\* or MIC-KEY\* J or GJ Tubes, ETO sterile

Kit Includes:

- Preloaded SAF-T-PEXY T-fasteners with resorbable 3/0 Biosyn\* suture and locking polyurethane suture lock
- Haemostat
- Serial Dilator
- Safety Scalpel
- Safety Introducer Needle
- Seeking catheter 0.38", 0.97mm guidewire compatible
- OTW Stoma Measuring Device for accurate measurement of the stoma tract for a low profile tube
- Telescopic Serial Dilator with integrated Peel Away Sheath
- Luer Slip Syringes

Product Code	Product Description	Packaging
98437	20Fr, Introducer Kit for Use with 16Fr MIC* J & GJ & MIC-KEY* J & GJ Tubes	1/Case
98438	22Fr, Introducer Kit for Use with 18Fr MIC* J & GJ & MIC-KEY* J & GJ Tubes	1/Case

Feeding tubes are not included in the kits and need to be ordered separately

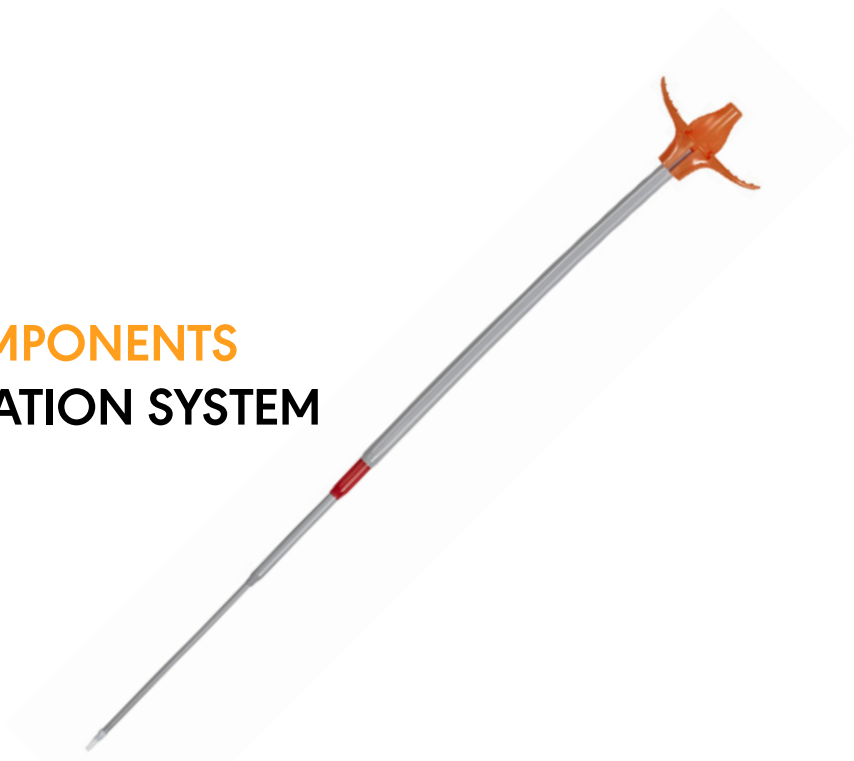


INTRODUCER KIT COMPONENTS  
GASTROINTESTINAL ANCHOR SET  
SAF-T-PEXY\* T-FASTENERS

Gastrointestinal Anchoring Set with SAF-T-PEXY Sutures, ETO sterile

Product Code	Product Description	Packaging
98701	SAF-T-PEXY* T-Fasteners, Gastrointestinal Anchor Set, plus Curved Haemostat	1 pack 3/Case

INTRODUCER KIT COMPONENTS  
ENTERAL ACCESS DILATION SYSTEM



Enteral Access Dilation System, ETO sterile

Product Code	Product Description	Packaging
98702	16Fr, Serial Dilator for Use with 12Fr Feeding Tube	1/Case
98703	18Fr, Serial Dilator for Use with 14Fr Feeding Tube	1/Case
98704	20Fr, Serial Dilator for Use with 16Fr Feeding Tube	1/Case
98705	22Fr, Serial Dilator for Use with 18Fr Feeding Tube	1/Case
98706	24Fr, Serial Dilator for Use with 20Fr Feeding Tube	1/Case



HOW TO CLEAN AND MAINTAIN  
EXTENSION SET CARE GUIDE AVAILABLE



0141-24 Y Port



0142-02



0143-12 Bolus



0144-12 Bolus

MIC-KEY\* Low profile extension sets with ENFit® connectors, non-sterile

Product Code	Product Description		
0142-02	MIC-KEY* Medication Set with SECUR-LOK* Right Angle Connector and 2 Ports "Y"	5.1 cm	5/Case
0141-12	MIC-KEY* Extension Set with SECUR-LOK* Right Angle Connector 2 Ports"Y" and Clamp	30.5 cm	5/Case
0141-24	MIC-KEY* Extension Set with SECUR-LOK* Right Angle Connector 2 Ports"Y" and Clamp	60.9 cm	5/Case
0143-12	MIC-KEY* Bolus Extension Set with SECUR-LOK* Straight Connector and Clamp	30.5 cm	5/Case
0143-24	MIC-KEY* Bolus Extension Set with SECUR-LOK* Straight Connector and Clamp	60.9 cm	5/Case
0144-12	MIC-KEY* Bolus Extension Set with SECUR-LOK* Right Angle Connector and Clamp	30.5 cm	5/Case
0144-24	MIC-KEY* Bolus Extension Set with SECUR-LOK* Right Angle Connector and Clamp	60.9 cm	5/Case

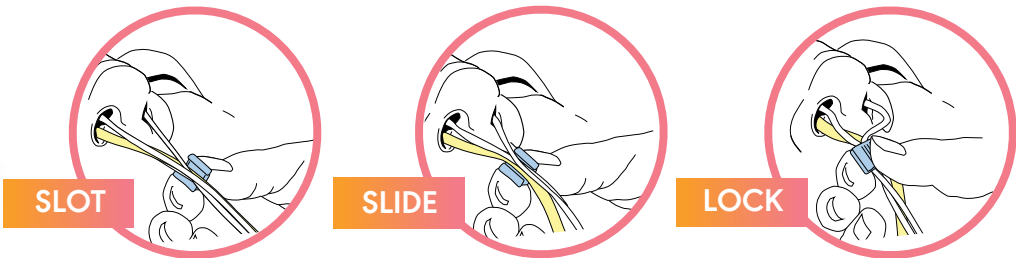


OVER-THE-WIRE (OTW)  
STOMA MEASURING DEVICE

MIC-KEY\* OTW Stoma Measuring Device, ETO sterile

Product Code	Product Description	Packaging
98460	MIC-KEY* Stoma Measuring Device	10/Case

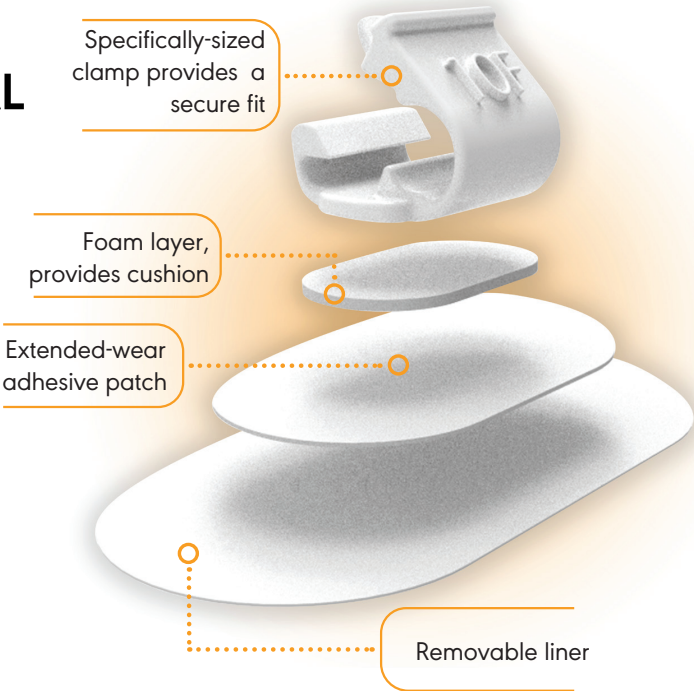
CORGRIP\*  
NASOGASTRIC/NASOINTESTINAL  
FEEDING TUBE RETENTION SYSTEM



CORGRIP\* Nasogastric/Nasointestinal (NG/NI) Tube Retention System

Product Code	Size	Color	Packaging
25-008	8 Fr	Pale Blue	10/Case
25-010	10 Fr	Pink	10/Case
25-012	12 Fr	White	10/Case
25-014	14 Fr	Yellow	10/Case
25-016	16 Fr	Orange	10/Case
25-018	18 Fr	Tan	10/Case

ANCORIS\*  
NASOGASTRIC/NASOINTESTINAL  
Tube Anchor Set



ANCORIS\* Nasogastric/Nasointestinal (NG/NI) Tube Anchor Set

Product Code	Size	Packaging
ATAS-6-NSB	6 FR, 6.5 FR	10/Case
ATAS-8-NSB	8 FR	10/Case
ATAS-10-NSB	10 FR	10/Case
ATAS-12-NSB	12 FR	10/Case
ATAS-14-NSB	14 FR	10/Case

CLOG ZAPPER\*  
ENTERAL FEEDING TUBE  
DECLOGGING SYSTEM



- Kit Includes:**
- 1 x 10ml Oral syringe with declogging powder
  - 1 x 10ml oral syringe (not used with ENFit® connectors on feeding tubes)
  - 1 x 31cm applicator
  - 2 x 10cm gauze pads.
- \*\*\*ENFit® syringe will be required for additional feeding tube water flushes\*\*\*



CLOG ZAPPER\* - Feeding Tube Declogging Kit

Product Code	Product Description	Packaging
20-0002	Clog Zapper*	10/Case

ΔVΔNOS

FARRELL\* VALVE SYSTEM

CONTINUOUS GASTRIC PRESSURE RELIEF

WITH ENFit® CONNECTORS



FARRELL\* Valve System - Continuous Gastric Pressure Relief with ENFit® Connectors

Product Code	Product Description	Packaging
43-4100	FARRELL* Valve System - Continuous Gastric Pressure Relief with ENFit® Connectors	30/Case

FEEDING TUBE ACCESSORIES

SIDE LOADING CLAMP



Side Loading Clamp, non-sterile

Product Code	Product Description	Packaging
090120038	Side Loading Clamp for use with MIC* G, J and GJ feeding tubes	50/Case



NASOGASTRIC/NASOINTESTINAL  
EXTENSION SETS

CORFLO\* Extension set with ENFit® connectors for NG/NI and Gastrostomy feeding tubes

Product Code	Product Description	Packaging
40-1007	ENFit® Enteral Y Extension Tube with Clamp	30/Case

**tubefed**

BY AVANOS

[www.tubefed.com.au](http://www.tubefed.com.au)

A comprehensive guide to tube  
feeding all in one place

**For more Information:**

**[www.avanos.com.au](http://www.avanos.com.au)**

**To Order:**

**1800 101 021 in Australia**

**0800 525 270 in New Zealand**

**[customerservice.anz@avanos.com](mailto:customerservice.anz@avanos.com)**

**AVANOS**

[www.avanos.com.au](http://www.avanos.com.au)

\* Registered Trademark or Trademark of Avanos Medical, Inc., or its affiliates.  
© 2018 AVNS. All rights reserved.  
COPY-06728